



the
UNIVERSITY
of
GREENWICH

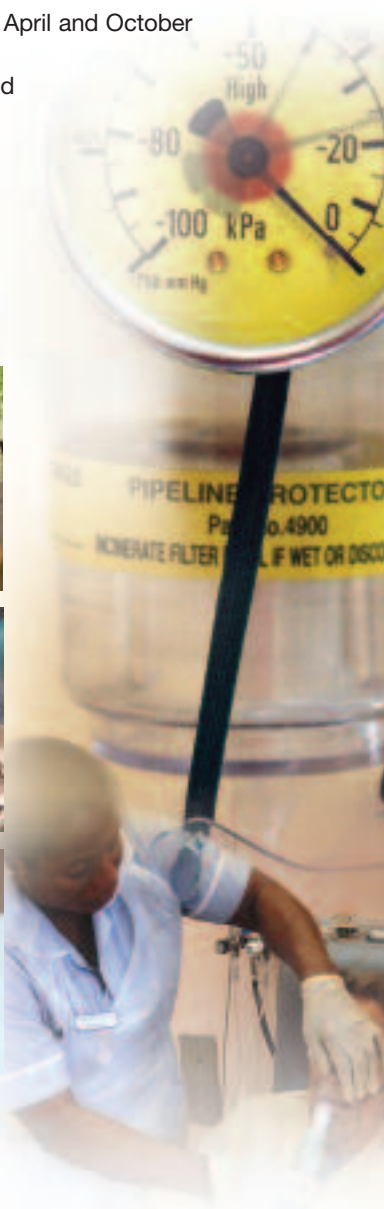


Lung Disease

Twelve-week course starting April and October

BioMed Online Learning

www.greenwich.ac.uk/biomed



Lung Disease

This course has been designed for:

- Biomedical scientists
- Clinical scientists
- Allied health professionals
- Doctors, especially junior/trainee pathologists
- Nurses
- Paramedics

When you have completed this course, you will be able to:

- Recognise the aetiological processes and risk factors of pulmonary pathology
- Comprehend pathogenetic mechanisms whereby aetiological factors and risk factors contribute to histopathological processes of disease
- Comprehend the histopathology of respiratory disease
- Demonstrate an awareness of investigative tools, disease progression and outcomes
- Use the Internet as a communication tool as well as a tool to find and evaluate information
- Produce reports to professional standards
- Produce materials for public presentations

Course Content

The course comprises two components:

Two face-to-face workshops

- Workshop 1: Introduction to WebCT, your tutor, and your course;
- Workshop 2: Course consolidation.

Guided online study of the following nine topics:

- Anatomy, physiology, embryology and pathological disorders of the lung
- Congenital Diseases
- Obstructive Airways Disease
- Pneumonia and the different forms of pneumonia
- Interstitial Lung Disease
- Vasculitis and Vascular Disorders
- Pulmonary Infiltrates with Eosinophilia



- Neoplasms of the Lung - the concepts of benign, malignant and secondary tumours
- The Pleura - macroscopic and microscopic disease entities, including aetiological factors

Study where you want, when you want, supported online by a tutor

- Take an accredited short course
- Gain 30 credits at Master's level
- Gain 100 Continuing Professional Development credits for portfolio and registration
- Can be used towards an IBMS accredited MSc in Biomedical Science (Online)

Biomed courses train you to:

- Use Internet-based applications
- Make effective presentations
- Use real-time chat rooms and discussion groups to support reflective learning

Biomed courses offer you:

- Online support from specialists in the field
- Online access to fellow students
- Self-assessment and quizzes to support your progress
- Rapid, meaningful feedback

The programme is accredited by the Institute of Biomedical Science.



Lung Disease

Enquiries

Name

Company name

Please send me further information on the following course(s):

- Quality Systems Management
- Implementing Advanced Quality Management
- Management of Healthcare Associated Infection
- Point of Care Testing
- Robotics and Automation
- Gene Structure and Function
- Analysis of Nucleic Acids
- Bioinformatics
- Renal Disease
- Lung Disease
- Diagnosis of Breast Cancer
- WebCT Training for Course Creators

Address

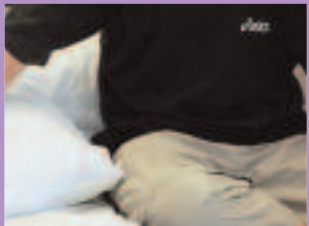
.....
.....
.....

E-mail

Telephone



the
UNIVERSITY
of
GREENWICH



Return in envelope to:

Cathy Ronan

BioMed Administration Manager

Grey Building

Southwood Site

Avery Hill Campus

Avery Hill Road

Eltham

London SE9 2UG



the
UNIVERSITY
of
GREENWICH

BioMed Online Learning

Grey Building
Southwood Site
Avery Hill Campus
Avery Hill Road
Eltham
London SE9 2UG

Telephone: 020 8331 9978

E-mail: biomed@gre.ac.uk



This document is available
in other formats on request

BioMed courses are owned by the BioMed Consortium,
comprising 17 NHS Trusts, the Health Protection Agency
and the University of Greenwich