



the  
UNIVERSITY  
of  
GREENWICH



# Diagnosis of Breast Cancer

Twelve-week course starting April and October

**BioMed Online Learning**

[www.greenwich.ac.uk/biomed](http://www.greenwich.ac.uk/biomed)



# Diagnosis of Breast Cancer

## This course has been designed for:

- Biomedical scientists
- Clinical scientists
- Allied health care professionals
- Doctors, especially trainee pathologists
- Nurses, especially breast care nurses
- Radiographers, especially mammographers

## Course Content

The course comprises two components:

### Two face-to-face workshops

- Workshop 1: Introduction to WebCT, your tutor, and your course;
- Workshop 2: Course consolidation.

### Guided online study of the following ten topics:

- Normal breast development, anatomy and histology
- Epidemiology risk factors and carcinogenesis of breast cancer
- Methods of detection of breast cancer, including clinical signs and imaging
- Handling of surgical breast specimens, histological techniques
- Benign breast disease
- Breast cancer types and nomenclature
- Prognostic Factors
- Diagnostic techniques including imaging, Fine Needle Aspiration (FNA) and Wide bore needle biopsies

- Immunohistochemistry of Breast Disease including HER2 testing, Oestrogen and Progesterone receptors and other breast cancer-associated proteins and technologies
- Molecular biology of breast cancer

## Study where you want, when you want, supported online by a tutor

- Take an accredited short course
- Gain 30 credits at Master's level
- Gain 100 Continuing Professional Development credits for portfolio and registration
- Can be used towards an IBMS accredited MSc in Biomedical Science (Online)

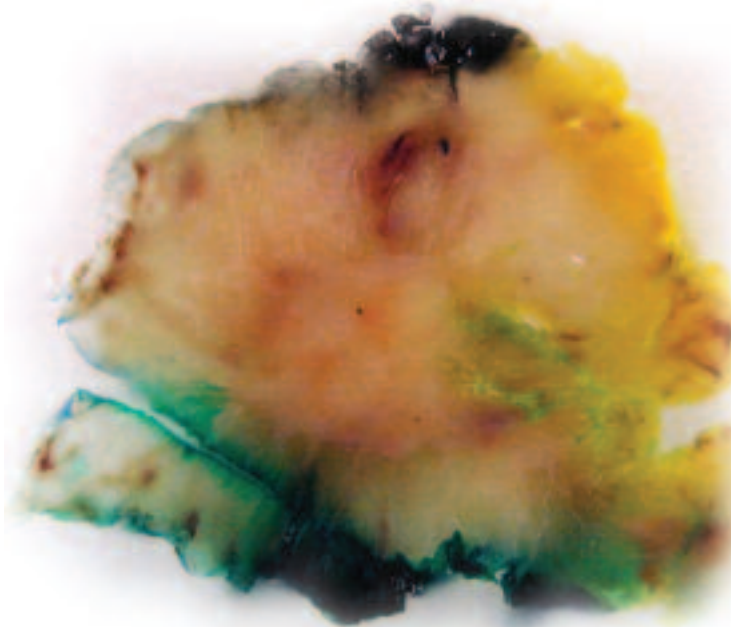
## Biomed courses train you to:

- Use Internet-based applications
- Make effective presentations
- Use real-time chat rooms and discussion groups to support reflective learning

## Biomed courses offer you:

- Online support from specialists in the field
- Online access to fellow students
- Self-assessment and quizzes to support your progress
- Rapid, meaningful feedback

The programme is accredited by the Institute of Biomedical Science.



# Diagnosis of Breast Cancer

## Enquiries

**Name** .....

**Company name** .....

*Please send me further information on the following course(s):*

- Quality Systems Management
- Implementing Advanced Quality Management
- Management of Healthcare Associated Infection
- Point of Care Testing
- Robotics and Automation
- Gene Structure and Function
- Analysis of Nucleic Acids
- Bioinformatics
- Renal Disease
- Lung Disease
- Diagnosis of Breast Cancer
- WebCT Training for Course Creators

**Address** .....

.....

.....

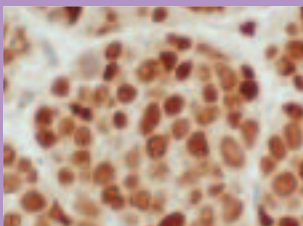
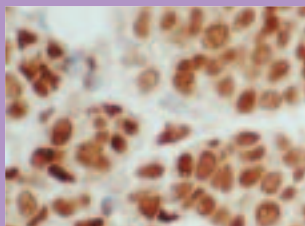
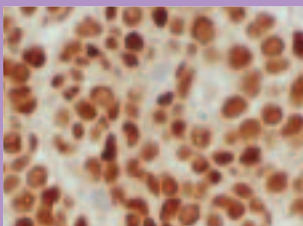
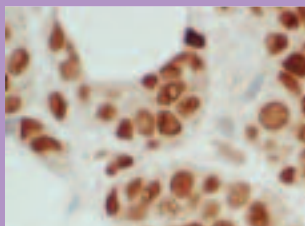
.....

**E-mail** .....

**Telephone** .....



the  
UNIVERSITY  
of  
GREENWICH



Return in envelope to:

**Cathy Ronan**

BioMed Administration Manager

Grey Building

Southwood Site

Avery Hill Campus

Avery Hill Road

Eltham

London SE9 2UG



the  
UNIVERSITY  
of  
GREENWICH

### **BioMed Online Learning**

Grey Building  
Southwood Site  
Avery Hill Campus  
Avery Hill Road  
Eltham  
London SE9 2UG

Telephone: 020 8331 9978

E-mail: [biomed@gre.ac.uk](mailto:biomed@gre.ac.uk)



This document is available  
in other formats on request

BioMed courses are owned by the BioMed Consortium,  
comprising 17 NHS Trusts, the Health Protection Agency  
and the University of Greenwich