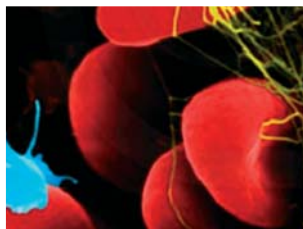
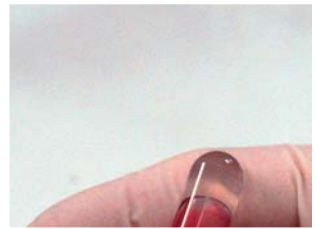
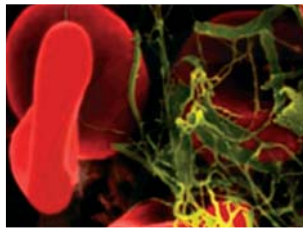




BioMed Online Learning Courses

Blood Transfusion

Practical, Clinical and
Managerial Aspects



Blood Transfusion

This 12-week course, starting in April and October, has been designed for:

- Biomedical scientists seeking to become transfusion practitioners
- Those embracing management of the broader aspects of a pathology service or moving into managerial positions
- Other healthcare professionals, including nurses and doctors involved in transfusion
- Blood service staff seeking Continuing Professional Development (CPD) in clinical aspects of transfusion.

Course content

The course comprises two components:

- *Two face-to-face workshops held at Greenwich Campus:*
 - Workshop 1: an introduction to WebCT, your tutor and your course
 - Workshop 2: course consolidation.
- *Guided online study of the following five topics:*
 - Blood group serology
 - The role of the blood service
 - Blood management and conservation
 - Blood transfusion management
 - Education, training and competency
 - Legislation, standards and guidelines
 - Governance.



Other online courses

- Advanced Human Genetics
- Analysis of Nucleic Acids
- Blood Transfusion
- Diagnosis of Breast Cancer
- Governance and Risk Management – *new for 2009*
- Implementing Advanced Quality Management
- Lung Disease
- Management of Healthcare Associated Infection
- Metabolomics – *new for 2009*
- Point of Care Testing
- Quality Systems Management
- Renal Disease
- Robotics and Automation.

We offer

- A high level of student support (tutor:student ratio of 1:10)
- 100 Continuing Professional Development points from the Institute of Biomedical Science for each course
- An MSc accredited by the Institute of Biomedical Science – four online courses plus a workplace-based project.

Want to know more?

- Log on to www.gre.ac.uk/biomed for booking forms and information.
- E-mail the Biomed administration manager at biomed@gre.ac.uk.
- Telephone 020 8331 9978.





the
UNIVERSITY
of
GREENWICH

University of Greenwich

BioMed Online Learning

Grey Building

Southwood Site

Avery Hill Campus

Avery Hill Road

Eltham

London SE9 2UG

Telephone: 020 8331 9978

E-mail: biomed@gre.ac.uk

Website: www.gre.ac.uk/biomed

**Register for publications
and become a Greenwich VIP**



www.gre.ac.uk/study



**This document is available
in other formats on request**

BioMed courses are owned by the BioMed Consortium comprising 17 NHS trusts, the Health Protection Agency and the University of Greenwich.

University of Greenwich, a charity and company limited by guarantee, registered in England (reg. no. 986729).

Registered office: Old Royal Naval College, Park Row, Greenwich, London SE10 9LS